

BACKGROUND PAPER FOR PARISH PROFILE

THE PARISH OF COLN ST ALDWYNS, HATHEROP AND QUENINGTON

in the South Cotswolds Team Ministry
Cirencester Deanery
the Diocese of
Gloucester

WELCOME

South Cotswolds Team Ministry

Thank you for taking an interest in this stipendiary post of Team Rector in the South Cotswolds Team Ministry, also caring for the communities of Coln St Aldwyns, Hatherop and Quenington. You will find an able and enthusiastic PCC and good supportive people with whom to work.

The South Cotswolds Team comprises some 15 parishes and 22 churches stretching from Ampney Crucis, near Cirencester in the west to Lechlade in the east; and from Castle Eaton in the south to Winson in the north. It currently has four stipendiary clergy and two house-for-duty clergy; a Locally Ordained Minister, a number of Readers and supportive retired clergy colleagues. It also has a full-time Youth Worker.

The Team are working hard on what it means to be a 'Team' across a large area – the South Cotswolds - and how it uses the skills, gifts and opportunities available in building the kingdom of God here in this place. The good news is that members of the Team get on well together and enjoy working with each other! The members of the Team believe in supporting each other along with all the other things they do. You will be a key member of the Team.

We are looking for someone who is willing to be a visible presence in the communities across the South Cotswold Team and the CHQ parish, draw the Team Ministry together as seems most appropriate locally, and use the skills and talents of local people. A part of your role would be to serve as a Foundation Governor at the Hatherop CofE Primary School, and lead collective worship regularly, which is highly valued. There are good links to be further developed at Hatherop Castle School (a private school).

The Vicarage is a fine Georgian listed house, located in Coln St Aldwyns, adjacent to the church. Despite having rather grand proportions, it is a practical home. However, heating bills are larger than those in more modern homes and the Parish is willing to contribute towards heating costs. There is a good-sized garden, which is manageable, and plenty of parking space. There is ready access to Oxford, Swindon, Reading, Cheltenham, Gloucester, Bristol, Birmingham, and London.

The South Cotswolds is a beautiful place to live with excellent local schools and a very wide range of amenities. We very much hope you will consider applying for this post.

CHQ Parish - Who we are

We are three churches and villages which had been three separate parishes until 2013. The three villages are geographically close and as communities we work co-operatively together and yet maintain distinct identities.

Coln St Aldwyns, Quenington and Hatherop are relatively affluent and quintessentially attractive Cotswold villages – and yet there are pockets of deprivation, which tend to be hidden. There is also the hamlet of Honeycombe Leaze within the parish, which lies a little distance away from Quenington towards Fairford.

At present, we have one churchwarden for each church; each church has its own bank account and treasurer – and we have a CHQ Parish account into which fees are paid. However, we have one united PCC which works collectively on the administration of the Parish.

We are part of the South Cotswolds Team Ministry, which enables clergy to work together and support each other, whilst having responsibility for their own ‘patch’. We can draw on the talents of our Youth Worker. We are part of the large Cirencester Deanery, which has a friendly chapter and active Synod, and will provide administrative support to our clergy through a Deanery Hub.

There are great opportunities for the joys and challenges of rural ministry.

You will find welcoming communities who are looking forward to having a new clergy person to work with them and for them; and to be with them in times of need. You will meet people from every walk of life.

WHERE WE LIVE

Coln St Aldwyns



The Coln Stores is a community run shop serving our three local villages and beyond. It is very well managed and cared for and an exemplar of a community shop staffed by volunteers. It has an attractive coffee shop which is popular with visitors, cyclists and villagers. <http://www.colnstores.co.uk>

The village has its own civil Parish Council. <https://www.coln-st-alldwyns-parish-council.com>

The New Inn is a well-regarded public house with rooms, and a popular restaurant which is well-established. This provides a focus for hospitality and accommodation for visitors. <https://www.thenewinncoln.co.uk>



The village is set in an active rural farming community with varied agricultural enterprises.



There is a large permanent resident population in the village, although a few houses are occupied as second homes.

The Coln Choir, which is a community initiative, meet weekly in Quenington Village Hall, and perform regularly at concerts for various local charities. They sing from time to time at our monthly Choral Evensong, and at the Advent and Christmas Carol Services each year. Members of the choir also sing at weddings, if required.



The village has an excellent summer fete each year, which is well attended and raises money for a range of local charities.

The church is a mix of Early English (13th Century) and Perpendicular (15th Century) and has a splendid Norman doorway. It is held in affection by the local community and is popular for weddings and baptisms because of family links with the village.

Hatherop

Hatherop is a small community comprising c60 dwellings. This was originally an estate village serving the Hatherop Castle estate. It has its own Parish Council, which does not have a website.

There is a small and well regarded CofE Primary School at Hatherop with c80 pupils. <https://www.hatherop.gloucs.sch.uk>



Hatherop C.E. Primary School Founded in 1856

The school writes on its website: “The local community is very much part of our everyday life at school and we have a strong relationship with the local CHQ Parish that includes Hatherop, Coln St. Aldwyns and Quenington. We use the church building throughout the year for services at Harvest, Remembrance, Christmas, Easter, Ascension and at the end of year Leavers’ Service, as well as for curriculum activities. Members of the congregation volunteer at the school in many ways, including as governors, as part of the ‘Open the Book’ team, listening to children read and accompanying us on school trips.”

Adjacent to Hatherop Church is Hatherop Castle Preparatory School, a day and boarding school which teaches children from nursery age to 13 years. The school has extremely good links with the church and parish. We are delighted that it uses Hatherop Church as its chapel for weekly services and events. There is an access route to the church from the grounds of the school – where there is parking. The vicar regularly leads collective worship in the school; and the school kindly allows the parish to use its facilities for church events and activities when possible.



An interesting recent development in this village has been the construction of a new private Roman Catholic chapel on the Williamstrip estate, which has its own regular services.

Quenington

The village is in essence made up of two parts - the lower part closest to the church comprising the larger, older houses and the upper part of the village consisting of newer houses, some of which were/are council owned, as well as three new developments, post 1985. There are 265 properties in the village and the outlying properties, plus an additional 13 properties in the hamlet of Honeycombe Leaze. There are proposals for around 50 new homes in the draft Cotswold District Local Plan.

Quenington has a civil Parish Council, which manages the civil Burial ground, which has recently been extended. <https://queningtonvillage.uk>

The village green, which is very well kept, is a super asset in the community and is used for a regular annual Fair.



On the village green there is an attractive Village Hall. Originally, this was a Gospel Hall used as a non-conformist church; and in recent years was taken over by the community and renovated. It is a well-used village facility, and the Coln Choir rehearses in this space each Monday. <https://queningtonvillage.uk>

There are regular Saturday morning monthly coffee mornings in the Village Hall, hosted by the Village Hall committee as well as other user groups who meet in the Village Hall including a Toddlers group, Pilates, and Keep Fit. There is an annual Fete which takes place in various gardens in the village. It has been most frequently held in the Old Rectory, opposite the church, in the grounds of Lucy Abel-Smith who also hosts the biannual Fresh Air sculpture show. For the past two shows we have had a book sale in the church as well as displaying art and sculptures from the local C of E Primary school, Hatherop Castle School, Farmor's Secondary school and the Ernest Cook Trust, which promotes education projects relating to the rural environment. This year our fete was held in the grounds of Court Farm, the headquarters of the Ernest Cook Trust. <https://ernestcooktrust.org.uk>



The Old Rectory lies opposite St Swithin's Church, in Quenington and hosts a bi-annual sculpture exhibition, which attracts visitors from far afield. The owner of The Old Rectory is a great supporter of the church and parish life and generously offers her home and gardens for events. The annual village Fete is sometimes held there.

<http://www.freshairsculpture.com>

The village has a thriving pub - the Keepers Arms. <http://thekeepersarms.co.uk>

A charming rural business which lies within the Parish is the Donkeywell Forge, which produces high quality metal work of different kinds. <https://www.donkeywellforge.co.uk> Until recently there was a substantial business based in the village – Xylem Pumps. However, this is on the point of closing, and the site is subject to a planning application which may result in a mixed development of housing and employment uses.

OUR CHURCH LIFE

The South Cotswolds Team Ministry

This is a moment of genuine possibility — three vacancies, a new Deanery Strategic Pathway, and a team that is ready to grow. We are looking for a Team Rector who wants to build something together.

The South Cotswold Team Ministry is a large and varied rural network, covering 15 parishes, 22 churches and 11 schools across some of the most beautiful countryside in Gloucestershire. The market towns of Fairford, Lechlade and Kempford anchor the Team's life, surrounded by a wide spread of small village communities east of Cirencester.

The Team was formed in 2008 and has operated with a light-touch shared structure ever since. One that has given clergy genuine mutual support while allowing each community to keep its local character - that has served the Team well. The three current vacancies have opened a real and welcome opportunity to ask fresh questions about how we work

together, and what kind of Team we want to become. We are in a season of discernment and possibility, and we want to step into it well.

The Team currently includes the following posts:

Team Vicar, Fairford (F/T)

Team Vicar, Lechlade with Eastleach, and Southrop (F/T)

Team Vicar, Bibury, Winson, and Barnsley – also Diocesan Missioner (House for Duty)

Ordained Local Minister – also serves as Area Dean

Curates – two posts currently in training

Team Youth Worker – working across the whole team

There are several retired clergy who assist across the Team and we have several able Readers who are willing to lead services. A PTO retired Priest is actively involved with these parishes and would be available to continue to do so.

Chris Saunders is Team Youth Worker who operates across the team area – organising a variety of activities which enable young teenagers to explore faith in different settings.

Chris leads a weekly ‘youth group’ in Fairford and Kempsford, and an ‘enquirers’ group – ‘Thirst’.

Cirencester Deanery

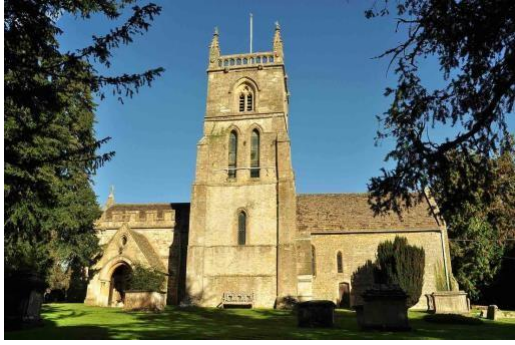
The South Cotswold Team sits within the Cirencester Deanery, which is in an active and well-resourced period of strategic development. The Deanery Strategic Pathway (DSP) sets out twelve focus areas, with Creation Care as a cross-cutting commitment running through all of them, shaped in conversation with active members of the deanery and by the diocesan LIFE vision.

A new Deanery Operations Lead has recently been appointed — a dedicated post that will bring operational and administrative capacity to support clergy and lay leaders across the whole deanery.

Coln St Aldwyns

The church is dedicated to the decollation (beheading) of St John the Baptist! We are a friendly parish church seeking to deepen our faith, to serve our community and enjoy the fullness of life that Jesus promised his followers. Together with the churches in Hatherop and Quenington we are part of the CHQ parish in the South Cotswold Team Ministry.

The name of the village indicates that the church in the village was originally dedicated to St Aylwin, taken to be a form of St Æthelwine, which later became St Aldwyn. At some point between 1535 and 1700 the dedication of the church was changed to St John the Baptist. The church, in the very south of the parish, was mostly built in the late 12th and early 13th centuries with extensive 19th century renovations and is a Grade II* listed building.



St John the Baptist Church consists of chancel, nave, north transept, and a late Norman south porch, with (unusually) a tower on the south side, completed in the fifteenth century, with clock, and 8 bells. The chancel's lancet windows date from the thirteenth century. The chancel was refurbished in the early 20th century in commemoration of the first Earl St Aldwyn, his son and wife who all died in 1916.

The Rev. John Keble M.A. was vicar here for 52 years, until his death in 1835, aged 90. John Keble (1792-1866), poet and clergyman, and author of "The Christian Year" was his son. He was professor of poetry at Oxford University, 1831-42 and one of four members of the University to originate the so-called 'Tractarian' movement, which *"sought to recover the Catholic heritage of the Church of England"*; he also acted as his father's curate. Keble College Oxford was founded in his name. Their ministry is commemorated in the church's east windows.

Our services are mainly Holy Communion Common Worship, with refreshments served after the morning Communion service. At present we have occasional Evening Prayer or Morning Prayer services, based on 1928 BCP. The Coln Choir sometimes sing at the Evensong service and at most festivals. We tend to have an average congregation of around 20-25, of a mainly mature age group. One of our aims is to encourage the local families and newcomers, who are moving into the village, into our church.

The local Bell-Ringers use the church for their regular weekly practice and ring most Sundays when there is a service in Coln or Hatherop. The parish has an excellent regular organist, who plays for all three of our churches, and another who will cover if available when needed. On the occasional Sunday when we do not have an organist, we have a digital music facility which provides recorded accompaniment for our hymns.

The Churchwarden is David Hicks Beach, younger brother of the Earl St Aldwyn, who has lived in the village all his life. The Earl is a Patron of the church and is very supportive of the church and church life.

There is a real opportunity for church growth in this community.

Hatherop

St Nicholas Church is rather hidden away and is reached via a staircase from the grounds of Hatherop Castle School or a lengthy footpath leading from a Lych Gate in the village, past the village football pitch.



This place of worship was founded before 1578. The foundation of St Nicholas's is uncertain, as it was rebuilt by Henry Clutton (architect), with the assistance of the famous art-architect William Burgess, in the early 1850s for the lord of the Manor, William Ponsonby, first Baron de Mauley. It consists of chancel, nave, aisles, north porch and a central saddleback tower containing 6 bells, which were gifted to the church in 1715 by Sir John Webb. It also has a clock, with chimes, presented to the church in 1868 by Sir Thomas Bazley.

Attached to the church is a beautiful mortuary chapel, with a marble monument, by Raffaele Monti, to Barbara, Lady de Mauley (d.1844), erected by her husband, the Baron. The mortuary chapel is a magnificent example of Burgess' early work, and his influence is everywhere especially in the carved stone animals and angels. The Baron also restored Hatherop Castle, said to date from the time of Henry VII, around the same time. The church stands on the site of an older mediaeval building whose nave roof it retains.

Most sources state the church is dedicated to St Nicholas, but the Religious Census of 1851 (HO 129/340/3/12/17) records it as dedicated to St Matthew. It was said to have been consecrated before 1800 and had 280 sittings.

As with Coln and Quenington, the church forms part of the CHQ parish, and is used on a rota for Holy Communion at 10.30am on one or two Sundays each month, with the occasional Evening Prayer service. Because it is the largest of our three churches it is often used on the major church Festivals of Christmas and Easter, as well as Remembrance Sunday, when we tend to have larger congregations of around 100. The peal of 6 bells is rung regularly, especially for weddings and other special occasions.

The church has well designed kitchen facilities, which mean that refreshments can be easily served and cleared away. This excellent resource is underused.

The church is used regularly by the two schools in Hatherop village (Hatherop CofE Primary School, and Hatherop Castle School which is a fee-paying school). During term-time the Castle School holds a service in the church on Friday afternoons. The Primary school holds regular term events in the church with Open the Book or Collective Worship on alternate weeks held in the school.

There are approximately 60 houses in the village with a few outlying properties, this is the smallest of the three villages and most of the houses are older and quite substantial.

Andrew Kirk is the Churchwarden.

Quenington



The church is believed to have been built around 1100, tying it in with records supporting its dedication to St Mary under the locally wealthy De Laci family. The Knights Templar took over the running of the church in 1193 from St Peter's Abbey, Gloucester, to whom the church had been granted (or by whom appropriated!) 55 years earlier in 1138. The church has Grade I listed status. When first built, the church was dedicated to the Virgin Mary. It was then rededicated to St Swithin

following the 16th-century Reformation. Its most notable features are two richly decorated Norman doorways: the tympanum above the north doorway features the Harrowing of Hell, and that above the south doorway the Coronation of the Virgin, said to be the oldest representation in Europe that is still in situ. The church was extensively restored in the 1880s by Frederick Waller. There are two Bale Tombs of historical interest in the churchyard, with the churchyard itself having been decommissioned many years ago.

Services of Holy Communion are held on a rota with Coln and Hatherop, usually on two Sundays per month starting at 10.30am. There is also an occasional Evensong or Taize service at which Coln Choir often lead the singing. Our congregation is similar to that of the other two villages, around 20-30 for a normal Sunday, but with larger attendances on Festival days.

We are keen to develop better links with the families and residents who do not attend church and are hoping to run more “friendly” fellowship type meetings in the Village Hall. The United parish holds a Harvest Supper in September/October, and Quenington regularly hosts a very popular Crib service on Christmas Eve, followed by mulled wine and mince-pies, which is well supported by church members as well as non-church members.

We are a very welcoming community and quite open to new ideas, if introduced slowly!!

The Churchwarden is James Sweeting.

Typical Sunday Service Schedule

| | Coln St Aldwyns | Hatherop | Quenington |
|------------------------|-----------------------------|----------|-----------------------------|
| 1 st Sunday | | | 10.30am Holy Communion |
| 2 nd Sunday | 10.30am Holy Communion | | 6pm Evensong * (Occasional) |
| 3 rd Sunday | 6pm Evensong * (Occasional) | | 10.30am Holy Communion |

| | | | |
|------------------------|------------------------|------------------------|--|
| | | | |
| 4 th Sunday | 10.30am Holy Communion | | |
| | | | |
| 5 th Sunday | | 10.30am Holy Communion | |

*Non-Eucharistic Service

Remembrance Sunday is always at Hatherop

Christmas Midnight Mass and Morning Communion alternate between the three churches

OUR OPPORTUNITIES AND CHALLENGES

Opportunities

There is an opportunity in these parishes and across the team to:

- exercise leadership in the Christian faith
- be an active presence within the church school
- re-establish a 'Family Service'
- re-establish relationships within the villages
- be a welcome and integral part of our village communities
- develop community outreach – including developing 'church services' in Quenington Village Hall, which is thought to be less 'daunting'
- exercise your own particular gifts and ministry

Challenges

As with any parochial role there are challenges to face up to, for us these include:

- addressing 'giving' and stewardship with congregations and communities
- growing church life and connecting with our communities
- helping us develop the SCTM and become more involved in the diocesan LIFE vision
- helping us to be more outward looking
- improving the link between the schools and the church congregation
- creating new pathways between the village families and the church

Our next Team Rector and CHQ vicar

Should you be still interested in the post let us tell you:

It will be a challenge but also very rewarding!

What we really, really want is someone who:

- will exercise Christian leadership
- will be a visible presence in our communities
- has broad shoulders and can introduce new ideas
- will work collaboratively within the South Cotswolds Team Ministry
- will give community outreach a priority
- can reach out to both the old and young people
- we can trust and feel is a friend when we are in need
- believes that we are all worthy of being disciples of Jesus

So, we don't want much really, but the most important thing to tell you is:

We do not expect you to do this alone.

We will all help you – the churchwardens, PCC, congregations, communities and Team clergy. There are potentially great rewards to this post, and we will help you to live life to the full and you to help us live our lives to the full!

We will:

- welcome you (and your family, if you have one)
- support and encourage you in your ministry
- pay your reasonable expenses on time
- provide you with a good house in Coln St Aldwyns
- help with filling the oil tank
- ensure you have the time off to which you are entitled – we will understand this your time is shared between the Team Rectorship and work as the CHQ vicar
- hold you in our prayers
- listen to you and walk with you.

The Vicarage, Coln St Aldwyns, Gloucestershire, GL7 5AL



The house available for this post is adjacent to Coln St Aldwyns church in the village – a short walk from the village shop. The house was lived in by The Rev'd John Keble, father of the famous cleric John Keble, in whose memory Keble College, Oxford was founded. John Keble junior spent some time as his father's curate in Coln.

This attractive five-bedroom family home is surrounded by a Cotswold stone wall and has a garden at front and a very private garden to the side. There is no rear garden as the property backs directly onto the churchyard.

There is a large drive which allows for off-street parking; and a double garage.



It is a well-proportioned Georgian house with good facilities and has been well-maintained.

Each of the downstairs reception rooms have woodburning stoves. The Parish recognises that the property is more expensive to heat than some modern homes and currently donates a full tank of oil each year to help with the associated costs of heating.

There is a large attic space, which has potential – as estate agents would say.

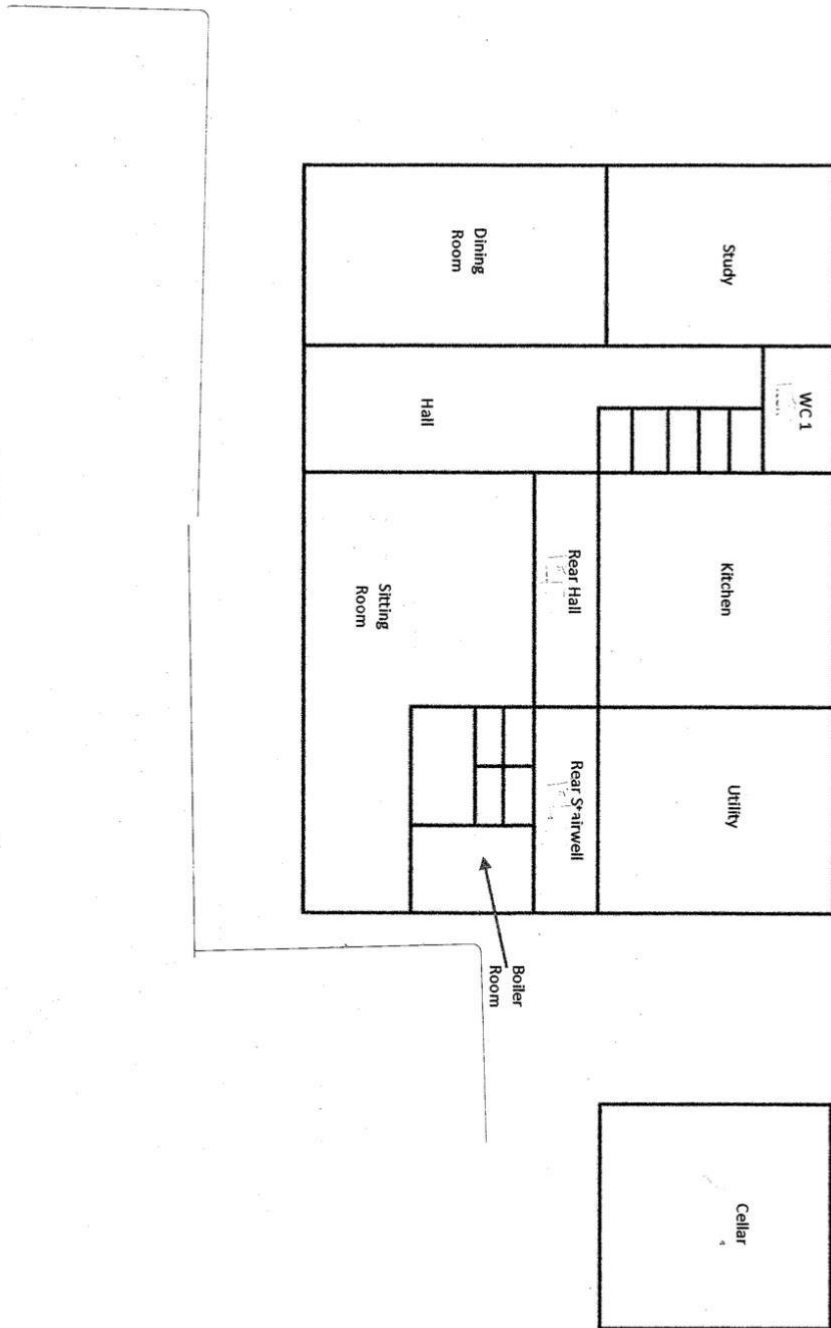
Coln St Aldwyns has an excellent pub and community shop. There is a good CofE Primary School in the adjacent village of Hatherop – to which you can walk. There are excellent facilities nearby and is also within easy access of Cirencester, Oxford, Cheltenham, Gloucester, and Swindon, and ready access to the M4 and M5.

We are fortunate to have very good schools at all levels locally. Local primary schools include: Hatherop, Fairford; Meysey Hampton; Lechlade.

Good secondary schools can be found in Fairford at Farmors; Cirencester – Kingshill and Deer Park; and at Burford. Some children travel into Cheltenham and Gloucester to grammar schools there. Marlborough College (not too far away) gives bursaries for clergy families.

Indicative floor plans are attached so you can get an idea of the layout:

Ground Floor Plan



First Floor Plan

